

Beaumont Davey Close, Faversham

Price Range £365,000



## Key Features

- Three Bedroom Linked Detached Home
- Private Close Of Just 4 Homes
- Newly Refurbished
- Larger Garden
- 0.7 Miles From Town Centre
- Off Street Parking for 2 vehicles
- Easy Access to the M2
- 0.4 Miles from the Mainline Station
- FREEHOLD - Council Tax Band D
- EPC Rating D (57)

## Property Summary

PRICE RANGE £365,000 - £385,000. Nestled at the end of a quiet cul-de-sac, this refurbished three-bedroom link-detached property sits within an exclusive development of just four homes, a truly rare find in this sought-after part of Faversham. With a new boiler installed, updated interiors throughout, a full 15' single garage, and a good-sized private garden, this is a turn-key opportunity ideal for families, couples, or downsizers alike.





Property Description

The spacious layout includes a welcoming entrance hall, generous dual-aspect lounge, and a bright kitchen/diner overlooking the rear garden, perfect for entertaining or everyday family life. A downstairs W.C. and a utility room enhance day-to-day practicality.

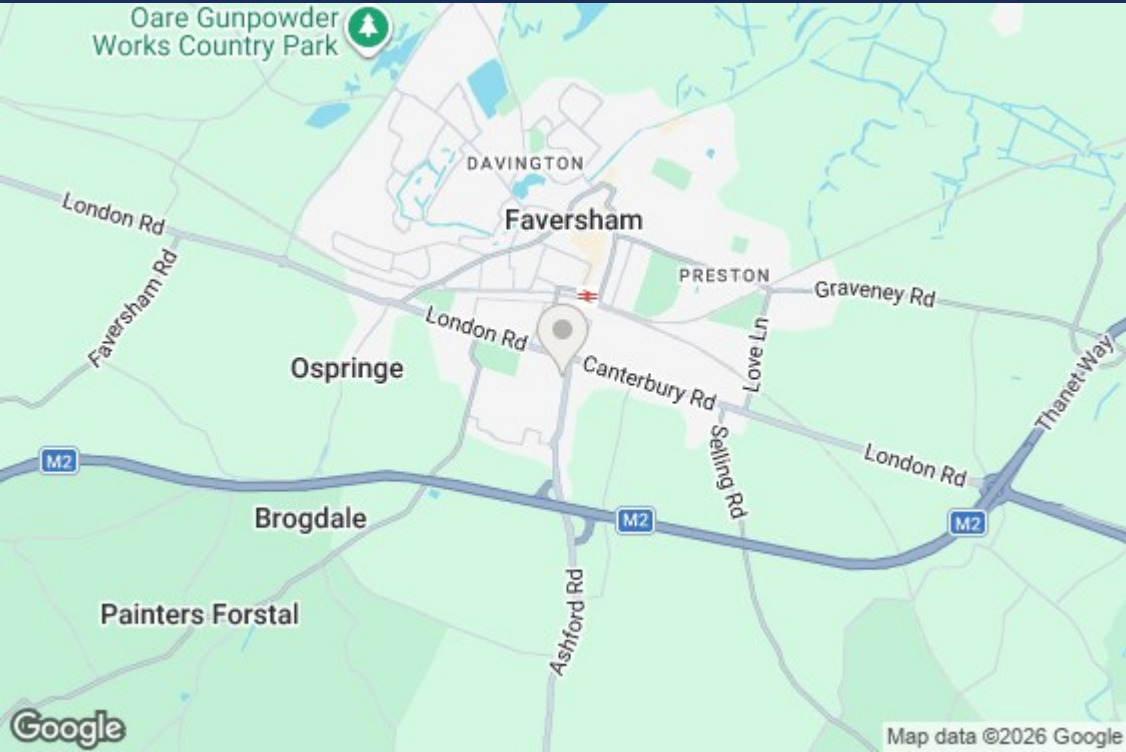
Upstairs, the property offers three well-proportioned bedrooms, including two doubles, and a stylish family bathroom. Outside, there is driveway parking for one car to the front, while the garage provides further storage or secure parking.

Located on a private close with only three neighbouring homes, this is a rare chance to enjoy a quiet, community setting while being just moments from Faversham's charming town centre, well-regarded schools, and excellent transport links.

About The Plot

Beaumont Davey Close occupies a unique and quietly tucked-away position off Ashford Road (A251) on the southern edge of Faversham, falling within the town's built-up boundary and close to the Faversham Fire Station site, the very reason this group of four homes was originally constructed. Historically, these dwellings were provided as housing for fire service staff, a legacy that contributes to the close's distinctive character and sense of place within the local neighbourhood.

The Close offers a peaceful setting with a strong sense of community, contrasted against its proximity to essential amenities. Despite being quietly positioned, it remains conveniently close to local facilities, with excellent access on foot or by car to Faversham town centre, schools, transport links and everyday services. The development itself benefits from a well-screened, slightly elevated site with mature greenery around the perimeter, providing privacy and a relaxed outlook.



About The Area

Faversham is one of Kent's most historic and characterful market towns, known for its beautiful period architecture, vibrant community feel, and excellent transport connections. Sitting just 10 miles west of Canterbury and nestled between the Kent Downs and the Thames Estuary, it offers a perfect balance of heritage charm and modern convenience.

At its heart lies a bustling town centre filled with independent shops, artisan cafés, traditional pubs, and a weekly Charter Market dating back over 900 years. The town is steeped in history — from its medieval abbey roots and quayside warehouses to its iconic Shepherd Neame brewery, the oldest in the country.

Families are well served by a selection of high-performing primary and secondary schools, and commuters benefit from Faversham's mainline station, offering regular trains into London Victoria, St Pancras, and Cannon Street — with journeys as short as 65 minutes.

Nature lovers are just minutes away from the Oare Marshes Nature Reserve, creekside walks, and the wider Kent countryside, while the M2 and A2 provide easy road access to Canterbury, Whitstable, and beyond.

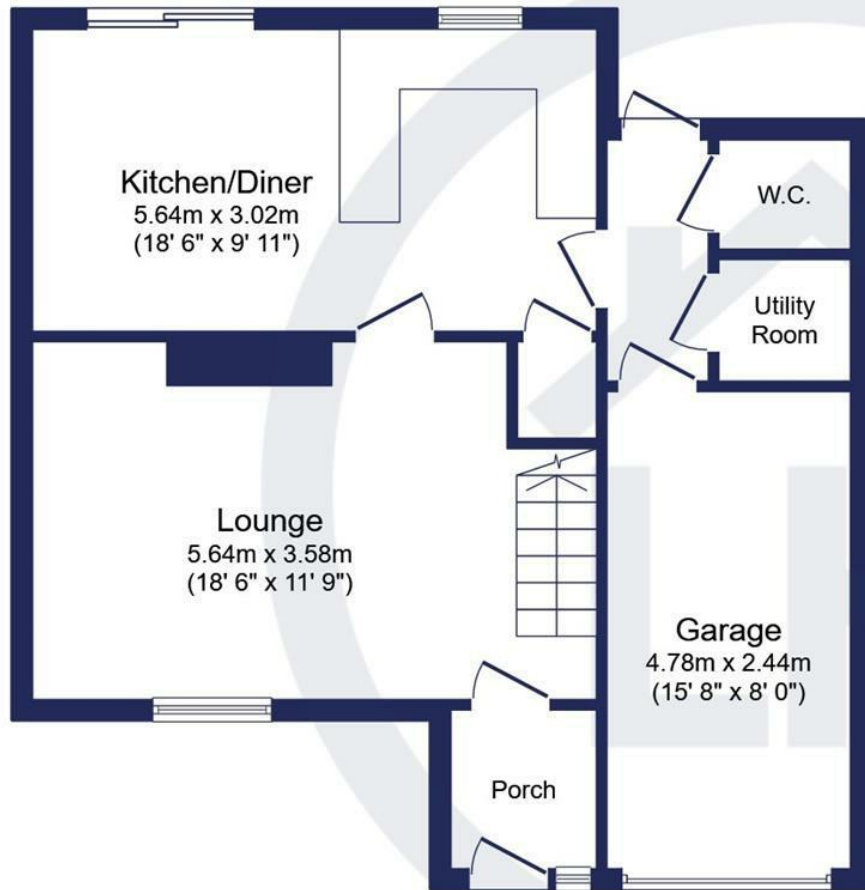
Faversham continues to grow in popularity thanks to its blend of historical charm, coastal proximity, and ongoing investment in homes and infrastructure, making it a highly desirable place to live, work, and raise a family.

Porch  
5'3 x 5'4

Lounge  
11'9 x 18'6

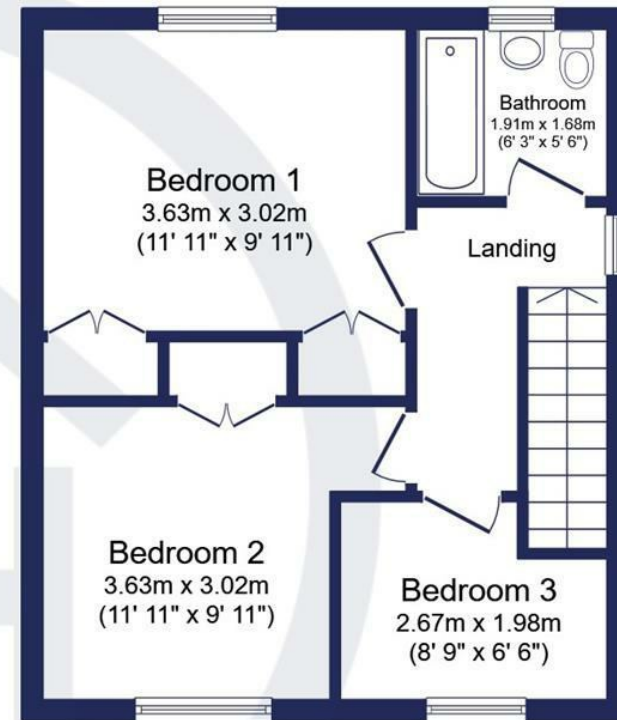
Kitchen  
9'11 x 18'6

Full Lenght Garage  
15'8 x 8'8



### Ground Floor

Floor area 58.8 sq.m. (633 sq.ft.)



### First Floor

Floor area 37.8 sq.m. (407 sq.ft.)

**Total floor area: 96.6 sq.m. (1,039 sq.ft.)**

This floor plan is for illustrative purposes only. It is not drawn to scale. Any measurements, floor areas (including any total floor area), openings and orientations are approximate. No details are guaranteed, they cannot be relied upon for any purpose and do not form any part of any agreement. No liability is taken for any error, omission or misstatement. A party must rely upon its own inspection(s). Powered by [www.Propertybox.io](http://www.Propertybox.io)



Energy Efficiency Rating		
	Current	Potential
Very energy efficient - lower running costs		
(92 plus) <b>A</b>		
(81-91) <b>B</b>		
(69-80) <b>C</b>		
(55-68) <b>D</b>		
(39-54) <b>E</b>		
(21-38) <b>F</b>		
(1-20) <b>G</b>		
Not energy efficient - higher running costs		
<b>England &amp; Wales</b> EU Directive 2002/91/EC		
Environmental Impact (CO <sub>2</sub> ) Rating		
	Current	Potential
Very environmentally friendly - lower CO <sub>2</sub> emissions		
(92 plus) <b>A</b>		
(81-91) <b>B</b>		
(69-80) <b>C</b>		
(55-68) <b>D</b>		
(39-54) <b>E</b>		
(21-38) <b>F</b>		
(1-20) <b>G</b>		
Not environmentally friendly - higher CO <sub>2</sub> emissions		
<b>England &amp; Wales</b> EU Directive 2002/91/EC		

Lamborn & Hill have produced these details in good faith and believe they provide a fair and accurate description of the property being marketed. Following inspection and prior to financial commitment prospective buyers should satisfy themselves as to the property's suitability and make their own enquiries, relating to specific points of importance for example condition of items, permissions, approvals and regulations. The accuracy of these details are not guaranteed and they do not form part of any contract.

19-21 West Street, Sittingbourne, Kent, ME10 1AJ

T: 01795 293000

[sittingbourne@lambornhill.com](mailto:sittingbourne@lambornhill.com)

[www.lambornhill.com](http://www.lambornhill.com)

